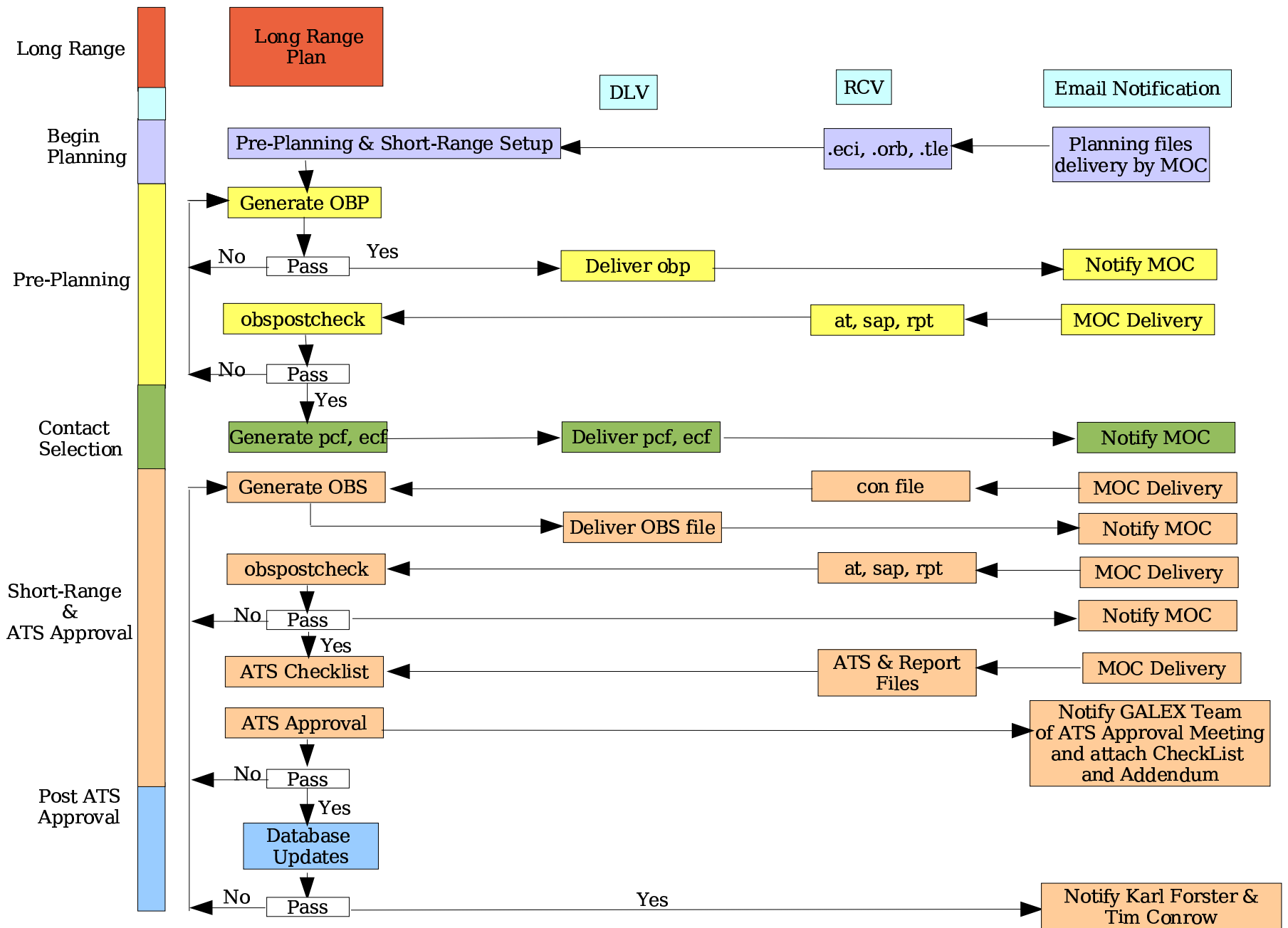


# MPS File Generation Overview

Paul Herrera

# MPS SOG Overview



## MPS SOC Improvements

- Contact selection is the most manual intensive part of the MPS SOC process
  - Solution would be to write software to allow the operator to select contacts and view their selection via real-time SSR modeling
  - Contact conflict avoidance S/W
    - Write code that would read-in the Operational Schedule and Forecast Schedule and notify operator of a scheduling conflict
- Viewing contacts and SSR plot on electronic board in the SOC
  - Instead of manually writing each contact on the white board, electronically transfer the contact list and the SSR plot to a database and upload onto the monitor
  - Have the ability to add comments or updates next to the passes
    - i.e. List SBAND passes, list VC32 & VC18 sequence errors, list activities for uplink and downlink, CAR information in regards to FUV, etc.

-