

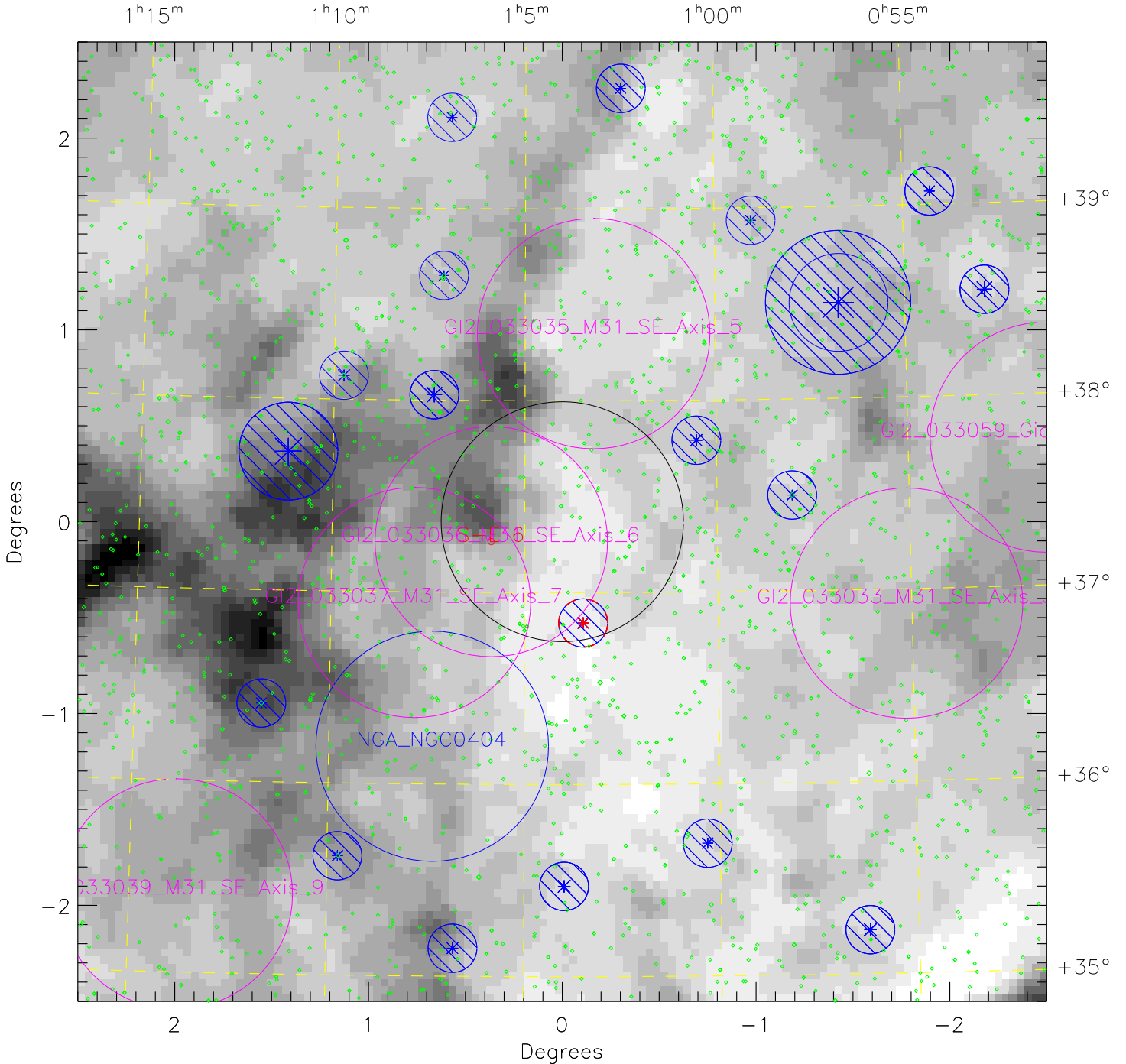
GI2 033036 M31 SE Axis 6-new

plan_id = 22065 target_id = GI2_033036_M31_SE_Axis_6 min_exp = 1500 max_zl_flux = 34980

Greyscale is $100\mu\text{m}$ emission 1.577 (white) to 4.736 (black) MJy/sr

Limit: $I_{100} \leq 0.75$ Median = 2.339 MJy/sr

Center (J2000): $1^{\text{h}}04^{\text{m}}0.00^{\text{s}}$ $+37^{\circ}21^{\text{m}}54.0^{\text{s}}$ $(l,b) = 125.696, -25.439$



NUV Star Count Rate: * 5000 s^{-1} * $4.5 \times 10^4 \text{ s}^{-1}$ * $2.0 \times 10^5 \text{ s}^{-1}$ * $1.0 \times 10^6 \text{ s}^{-1}$

◇ Stars fainter than 5000 s^{-1}