

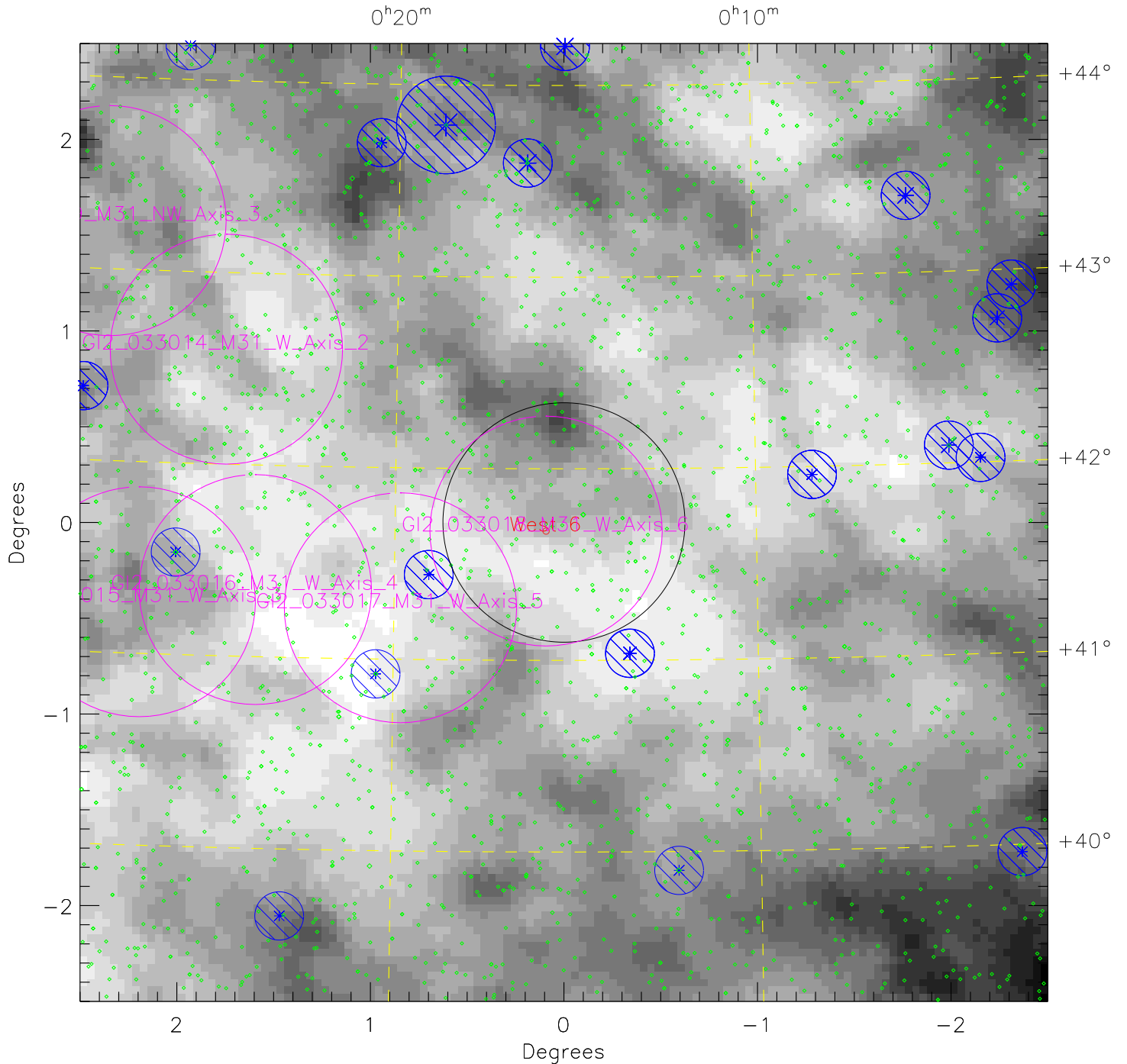
# GI2 033018-new

plan\_id = 22049 target\_id = GI2\_033018\_M31\_W\_Axis\_6 min\_exp = 1500 max\_zl\_flux = 24150

Greyscale is  $100\mu\text{m}$  emission 2.208 (white) to 5.105 (black) MJy/sr

Limit:  $I_{100} \leq 0.75$  Median = 3.145 MJy/sr

Center (J2000):  $0^{\text{h}}15^{\text{m}}17.99^{\text{s}}$   $+41^{\circ}42^{\text{m}}54.0^{\text{s}}$   $(l,b) = 115.736, -20.651$



NUV Star Count Rate: \*  $4500 \text{ s}^{-1}$  \*  $4.5 \times 10^4 \text{ s}^{-1}$  \*  $2.0 \times 10^5 \text{ s}^{-1}$  \*  $1.0 \times 10^6 \text{ s}^{-1}$

◇ Stars fainter than  $4500 \text{ s}^{-1}$