

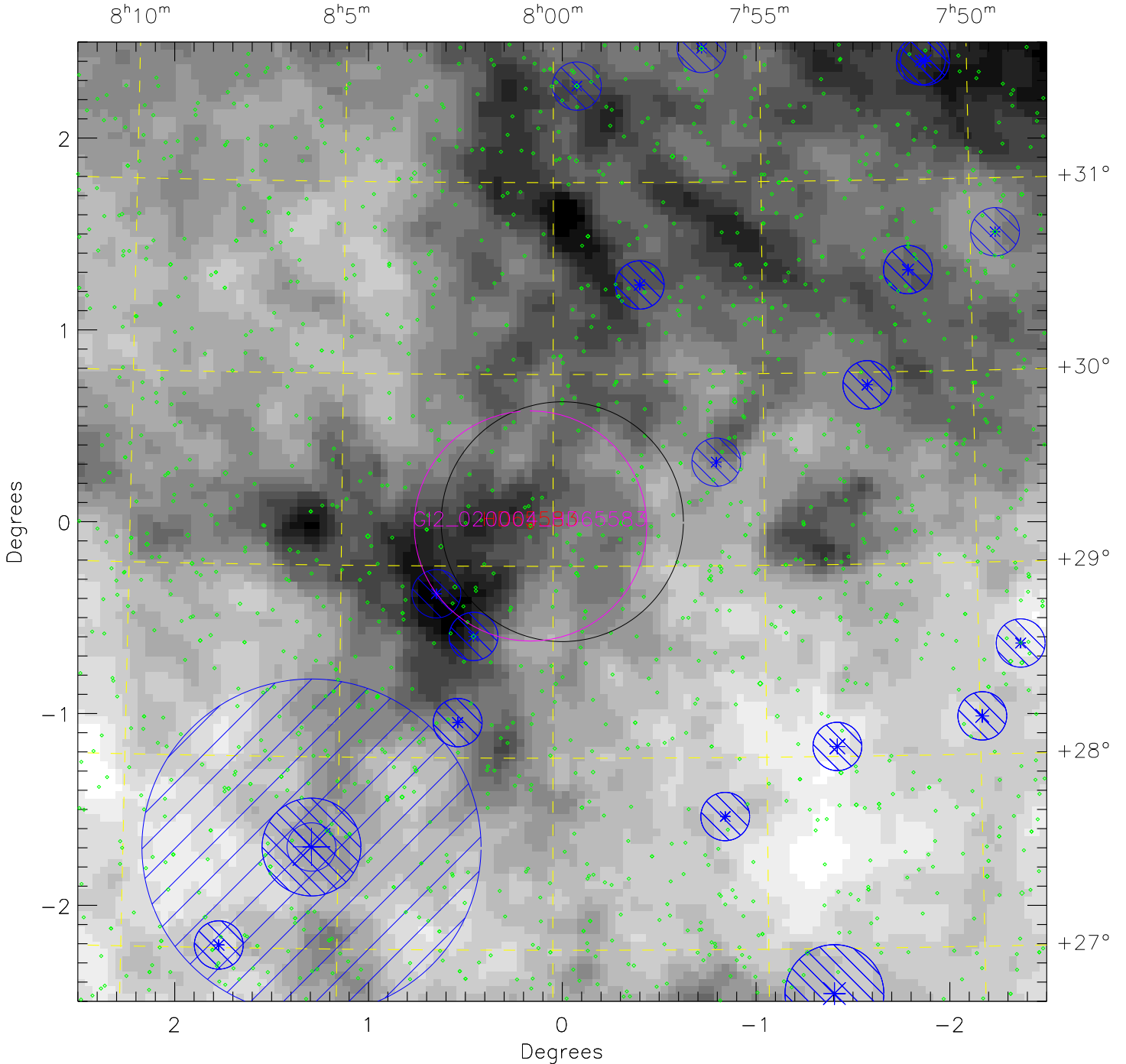
GI2 020004 HD65583–new

plan_id = 22025 target_id = GI2_020004_HD65583 min_exp = 15000 max_zl_flux = 15730

Greyscale is $100\mu\text{m}$ emission 1.234 (white) to 3.167 (black) MJy/sr

Limit: $I_{100} \leq 0.75$ Median = 1.980 MJy/sr

Center (J2000): $7^{\text{h}}59^{\text{m}}45.60^{\text{s}}$ $+29^{\circ}13^{\text{m}}40.8^{\text{s}}$ $(l,b) = 192.083, +26.793$



NUV Star Count Rate: * 4500 s^{-1} * $4.5 \times 10^4 \text{ s}^{-1}$ * $2.0 \times 10^5 \text{ s}^{-1}$ * $1.0 \times 10^6 \text{ s}^{-1}$

◇ Stars fainter than 4500 s^{-1}