

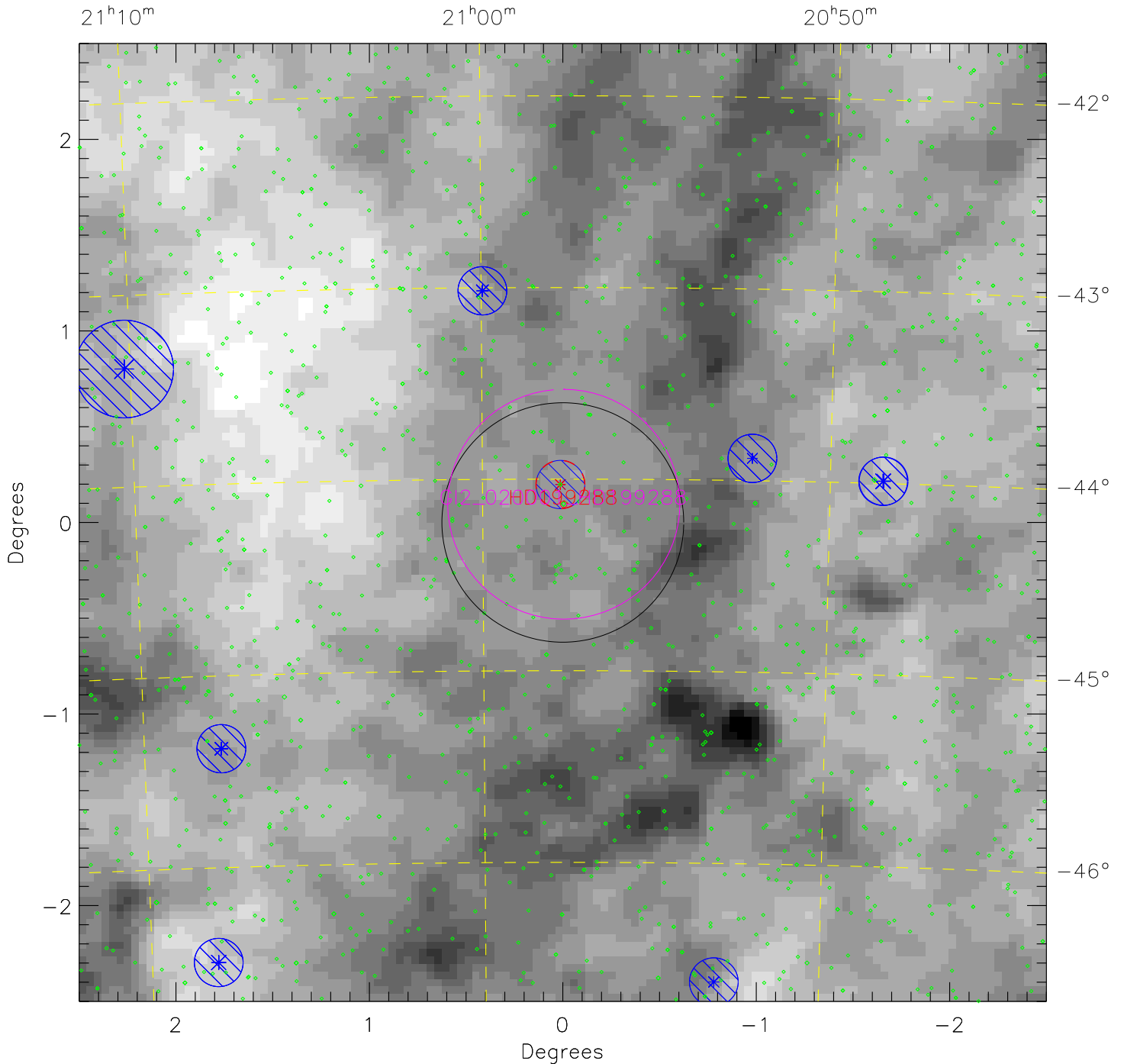
# GI2 020001 HD199288–new

plan\_id =22020/1 target\_id=GI2\_020001\_HD199288 min\_exp=1500/15000 max\_zl\_flux=26130

Greyscale is  $100\mu\text{m}$  emission 1.140 (white) to 3.125 (black) MJy/sr

Limit:  $I_{100} \leq 0.75$  Median = 1.891 MJy/sr

Center (J2000)  $20^{\text{h}}57^{\text{m}}39.78^{\text{s}}$   $-44^{\circ}13^{\text{m}}51.5^{\text{s}}$  ( $l, b$ ) = 356.552,  $-40.678$



NUV Star Count Rate: \*  $4500 \text{ s}^{-1}$  \*  $4.5 \times 10^4 \text{ s}^{-1}$  \*  $2.0 \times 10^5 \text{ s}^{-1}$  \*  $1.0 \times 10^6 \text{ s}^{-1}$

◇ Stars fainter than  $4500 \text{ s}^{-1}$