

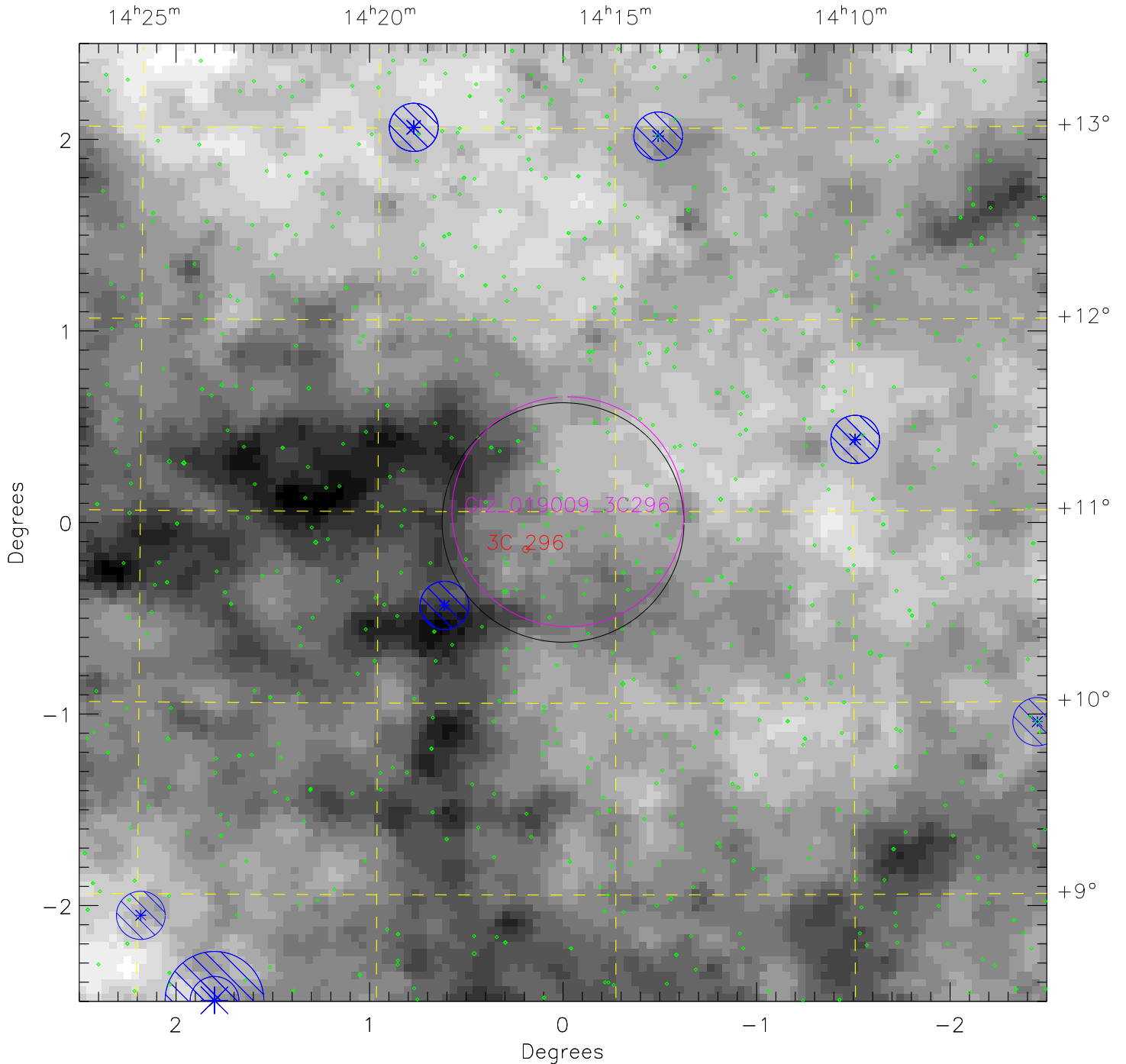
GI2 019009 3C296-new

plan_id = 22018 target_id = GI2_019009_3C296 min_exp = 7500 max_zl_flux = 40540

Greyscale is $100\mu\text{m}$ emission 0.805 (white) to 1.870 (black) MJy/sr

Limit: $I_{100} \leq 0.75$ Median = 1.232 MJy/sr

Center (J2000): $14^{\text{h}}16^{\text{m}}5.03^{\text{s}}$ $+10^{\circ}56^{\text{m}}20.4^{\text{s}}$ (l, b) = 357.884, +64.346



NUV Star Count Rate: * 4500 s^{-1} * $4.5 \times 10^4 \text{ s}^{-1}$ * $2.0 \times 10^5 \text{ s}^{-1}$ * $1.0 \times 10^6 \text{ s}^{-1}$

◇ Stars fainter than 4500 s^{-1}