

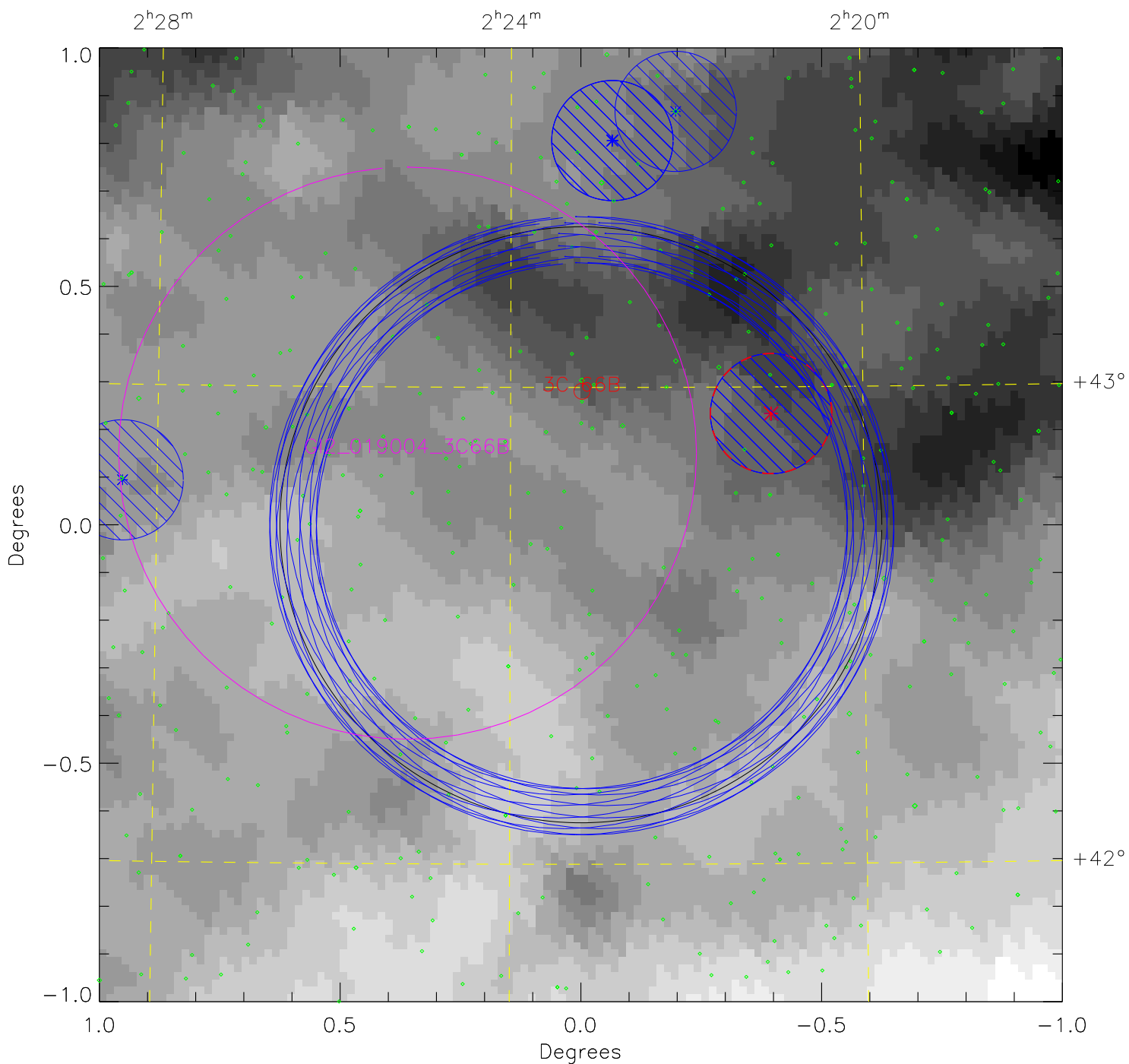
petal

petal field test petal pattern

Greyscale is $100\mu\text{m}$ emission 2.361 (white) to 5.097 (black) MJy/sr

Limit: $I_{100} \leq 0.75$ Median = 3.503 MJy/sr

Center (J2000): $2^{\text{h}}23^{\text{m}}11.51^{\text{s}}$ $+42^{\circ}42^{\text{m}}35.9^{\text{s}}$ (l, b) = 140.361, -17.035



NUV Star Count Rate: * 5000 s^{-1} * $4.5 \times 10^4 \text{ s}^{-1}$ * $2.0 \times 10^5 \text{ s}^{-1}$ * $1.0 \times 10^6 \text{ s}^{-1}$

◇ Stars fainter than 5000 s^{-1}