

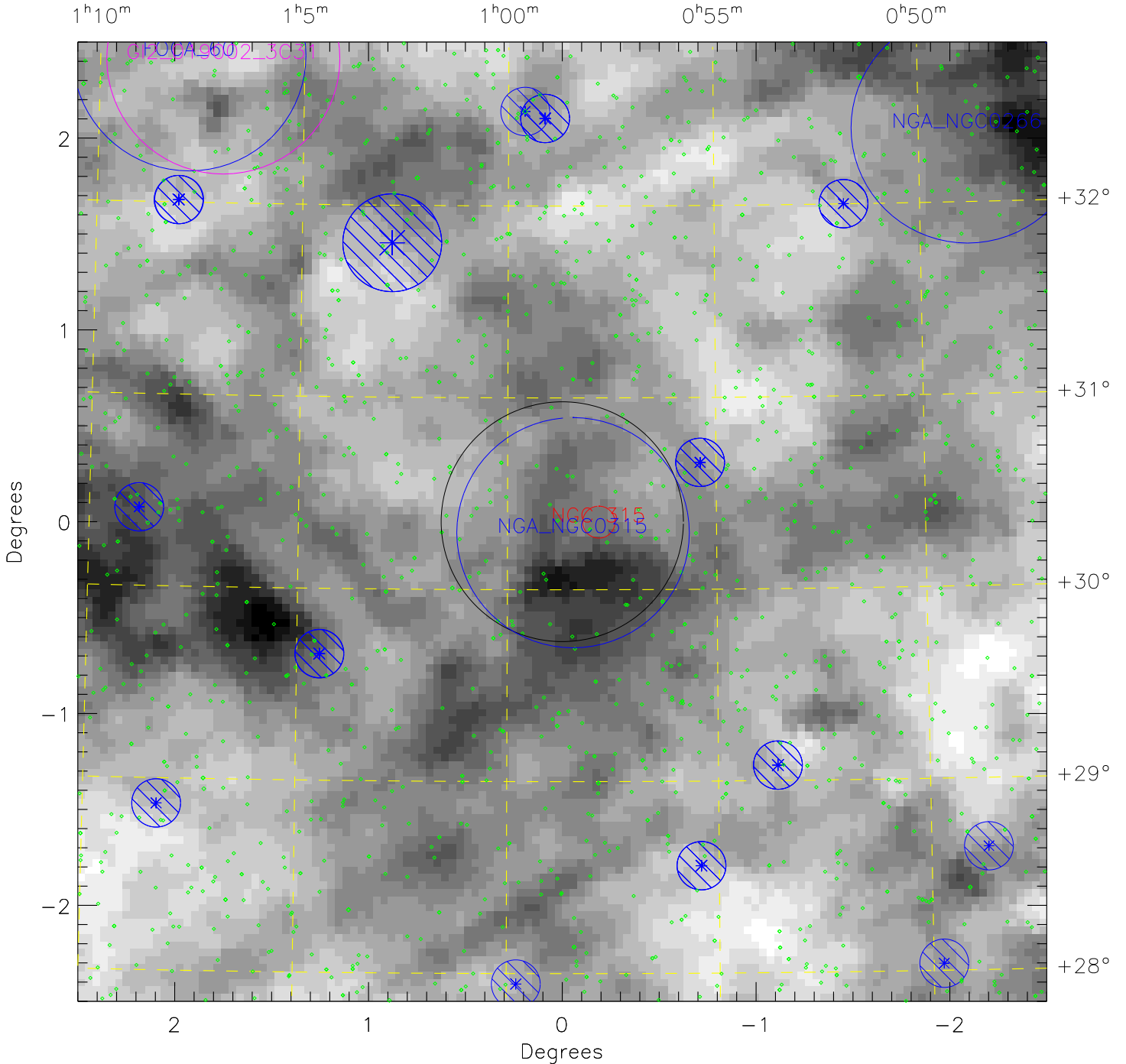
GI2 019001 NGC315

plan_id = 22010 target_id = GI2_019001_NGC315 min_exp = 1500 max_zl_flux = 40570

Greyscale is 100 μ m emission 2.051 (white) to 4.061 (black) MJy/sr

Limit: $I_{100} \leq 0.75$ Median = 2.811 MJy/sr

Center (J2000): 0^h58^m40.00^s +30°21^m0.0^s (l, b) = 124.781, -32.496



NUV Star Count Rate: * 4500 s⁻¹ * 4.5 x 10⁴ s⁻¹ * 2.0 x 10⁵ s⁻¹ * 1.0 x 10⁶ s⁻¹

◇ Stars fainter than 4500 s⁻¹