

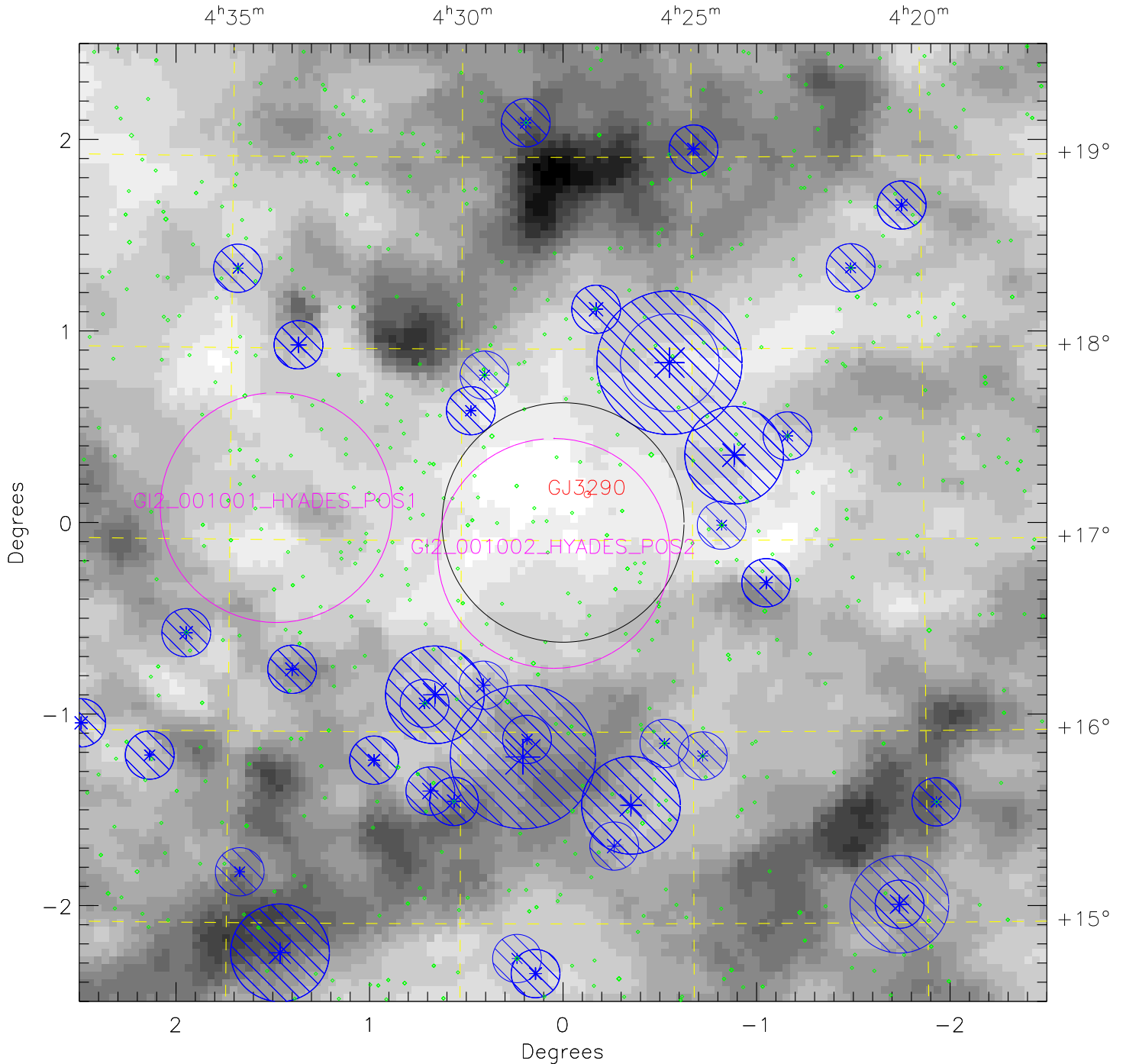
GI2 001002 HYADES POS2-new

plan_id = 22002 target_id = GI2_001002_HYADES_POS2 min_exp = 15000 max_zl_flux = 26820

Greyscale is $100\mu\text{m}$ emission 7.928 (white) to 24.924 (black) MJy/sr

Limit: $I_{100} \leq 0.75$ Median = 12.870 MJy/sr

Center (J2000): $4^{\text{h}}27^{\text{m}}46.79^{\text{s}}$ $+17^{\circ}05^{\text{m}}24.0^{\text{s}}$ (l, b) = 179.185, -21.407



NUV Star Count Rate: * 5000 s^{-1} * $4.5 \times 10^4 \text{ s}^{-1}$ * $2.0 \times 10^5 \text{ s}^{-1}$ * $1.0 \times 10^6 \text{ s}^{-1}$

◇ Stars fainter than 5000 s^{-1}