

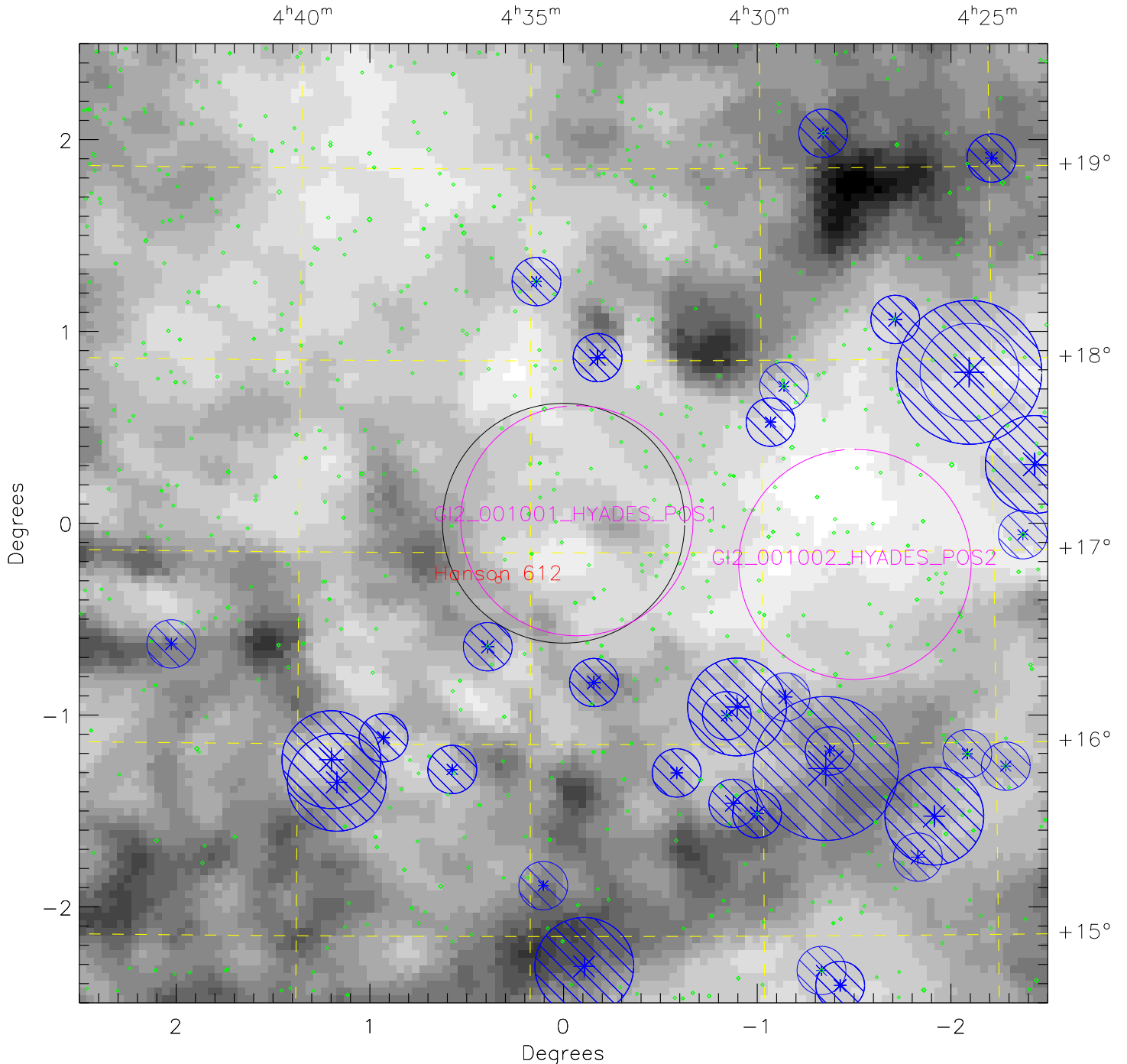
GI2 001001 HYADES POS1-new

plan_id = 22001 target_id = GI2_001001_HYADES_POS1 min_exp = 15000 max_zl_flux = 22700

Greyscale is $100\mu\text{m}$ emission 7.928 (white) to 24.826 (black) MJy/sr

Limit: $I_{100} \leq 0.75$ Median = 12.949 MJy/sr

Center (J2000): $4^{\text{h}}34^{\text{m}}16.08^{\text{s}}$ $+17^{\circ}08^{\text{m}}56.4^{\text{s}}$ (l, b) = 180.176, -20.163



NUV Star Count Rate: * 5000 s⁻¹ * 4.5 × 10⁴ s⁻¹ * 2.0 × 10⁵ s⁻¹ * 1.0 × 10⁶ s⁻¹
◇ Stars fainter than 5000 s⁻¹