

## Using Complex Numbers in Circuit Analysis and Review of the Algebra of Complex Numbers

The purpose of this note is to review the algebra of complex numbers and show how they can be used to simplify analyses of linear circuits. This is the basic theory behind how PSpice handles linear circuits (and linear small-signal approximations of non-linear circuits). The basic techniques are also widely used in many types of linear analysis found in physics and engineering (electrical or mechanical), so if you are majoring in one of those fields, you will need to become familiar with these techniques and concepts sooner or later, even though we will not use them extensively in this course. I illustrate the technique with a simple, standard LRC circuit and then with a non-trivial example, and I show how the same example can be easily solved by PSpice. At the end I discuss briefly how PSpice can handle much more complicated circuits, including non-linear circuits, by extending the same mathematical techniques.

Complex numbers are commonly used in electrical engineering, as well as in physics. In general they are used when some quantity has a *phase* as well as a *magnitude*. Such a situation occurs when one deals with sinusoidal oscillating voltage and current (other examples in physics include optics, where wave interference is important, and quantum mechanical wave functions). I want to emphasize that complex numbers are used to make calculations *easier*! Do not be intimidated by trying to imagine what an imaginary number is. There is no need for that. Instead, realize that there is nothing imaginary about the phase of a voltage waveform, and there is nothing particularly complex about working with complex numbers. Just look at them for now as a useful tool that you may as well start getting used to.<sup>1</sup> Complex numbers as used here are equivalent to the “phasors” used for this purpose in elementary physics textbooks. The advantage of calling them complex numbers instead of phasors is that you can make use of the (hopefully) familiar algebra of complex numbers.

You may also refer to Appendix B of Horowitz and Hill for a review of complex numbers.

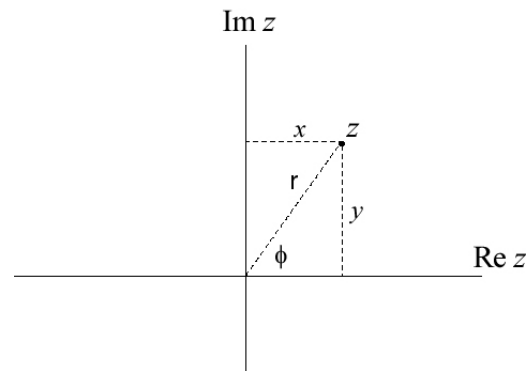


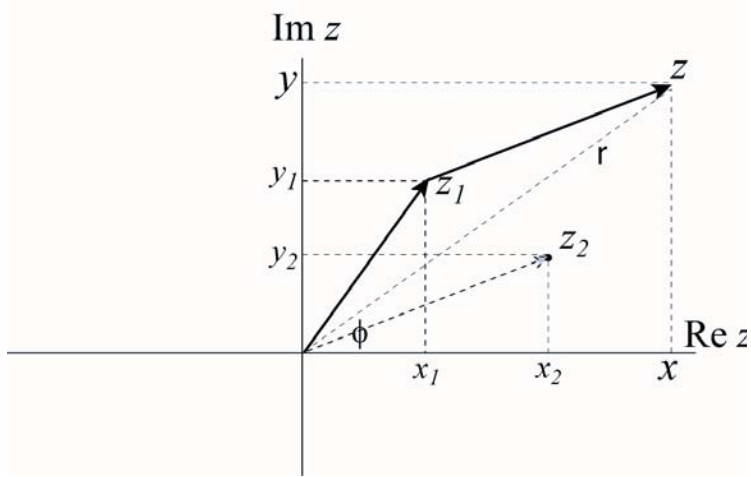
Figure 1. A complex number  $z$  shown in the complex plane.  $x$  is the real part of  $z$ ,  $y$  is the imaginary part of  $z$ ,  $r$  is the magnitude of  $z$ , and  $\phi$  is the phase of  $z$ .

---

<sup>1</sup> If you haven't already, then later you can study the beautiful and seemingly magical mathematics of functions of complex variables, but there is no need for that in this course.

## Representations of Complex Numbers

Let the symbol  $z$  represent a complex number, while  $x$  and  $y$  are its real and imaginary parts:  $z = x + jy$ , where  $j \equiv \sqrt{-1}$ .<sup>2</sup> The complex conjugate of  $z$  is  $z^* = x - jy$ . In general, to change a complex number into its complex conjugate, simply change  $j$  to  $-j$  everywhere. Then all of the normal rules of algebra apply, with the understanding that  $j^2 = -1$ :



**Figure 2.** Graphical representation of the addition of two complex numbers. Note how the two numbers add as vectors in 2-D when the real and imaginary parts are simply added as  $x=x_1+x_2$  and  $y=y_1+y_2$  respectively.

$$z^2 = (x + jy)^2 = x^2 - y^2 + j2xy$$

$$|z|^2 \equiv z \cdot z^* = (x + jy) \cdot (x - jy) = x^2 + y^2$$

$$z_1 + z_2 = (x_1 + jy_1) + (x_2 + jy_2) = (x_1 + x_2) + j(y_1 + y_2)$$

Since we want to use complex numbers to represent phases of waveforms, it is essential to understand the polar, as well as Cartesian, form of a complex number (see Figure 1). This is no different from conversions between rectangular and plane polar coordinates, except that instead of labeling the axes  $x$  and  $y$  we label them  $\text{Re}$  and  $\text{Im}$ . Think of the complex number as a 2-dimensional vector in a plane. Addition of two complex numbers looks exactly like vector addition, either graphically or algebraically (as in the addition example above and in Figure 2). And  $|z| = r = \sqrt{x^2 + y^2}$  is just the length of the vector.

Looking at Figure 1, you can see that

$$x = r \cos \phi$$

$$y = r \sin \phi$$

so we can write our complex number as

$$z = r \cos \phi + j \cdot r \sin \phi = r \cdot (\cos \phi + j \cdot \sin \phi) = r e^{j\phi}$$

where the last step makes use of Euler's formula:  $e^{j\phi} = \cos \phi + j \cdot \sin \phi$ . This essential relation points directly to one reason why complex numbers make circuit analysis easier. Instead of representing a sinusoidal voltage or current as a sine or cosine function, we can represent it as an exponential. Exponentials are much easier to work with algebraically!

<sup>2</sup> Electrical engineers, and our textbook, use this notation, but physicists and physics textbooks (and mathematicians) generally use the symbol  $i$  instead of  $j$ .

Unless you love dealing with complicated trig identities, choose the complex exponential over the sine and cosine functions!

Here is a summary of the two representations of a complex number:

$$\begin{array}{lll} z = x + jy & x = r \cos \phi & y = r \sin \phi \\ z = re^{j\phi} & r = \sqrt{x^2 + y^2} & \phi = \arctan(y/x) \end{array}$$

Keep in mind when calculating the phase  $\phi$  that there is in general an ambiguity of  $\pm \pi$  radians, which you have to resolve by looking at the signs of both  $y$  and  $x$ . The arctan function on your calculator will always return an angle in the range  $-\frac{\pi}{2} \rightarrow +\frac{\pi}{2}$ . You can avoid this ambiguity if you use the special function on your calculator for transforming between rectangular and polar coordinates. Also, computer languages usually include an inverse tangent function with two separate arguments for  $y$  and  $x$ , which will return the correct value of  $\phi$  in the range  $0 \rightarrow 2\pi$  or  $-\pi \rightarrow +\pi$  (e.g. ATAN2 in FORTRAN).

## Basic Algebra with Complex Numbers

Addition and subtraction of complex numbers are most easily done using the Cartesian (rectangular) form, for the same reason that vectors are most easily added and subtracted in Cartesian components.

$$\begin{aligned} z_1 + z_2 &= (x_1 + x_2) + j \cdot (y_1 + y_2) \\ z_1 - z_2 &= (x_1 - x_2) + j \cdot (y_1 - y_2) \end{aligned}$$

However, multiplication and division are most easily done using the polar form, making use of the properties of the exponential function:

$$\begin{aligned} z_1 \cdot z_2 &= r_1 \cdot r_2 \cdot e^{j(\phi_1 + \phi_2)} \\ \frac{z_1}{z_2} &= \frac{r_1}{r_2} \cdot e^{j(\phi_1 - \phi_2)} \end{aligned}$$

Nevertheless, multiplication in the rectangular form is straightforward:

$$z_1 \cdot z_2 = (x_1 + jy_1) \cdot (x_2 + jy_2) = (x_1x_2 - y_1y_2) + j \cdot (x_1y_2 + x_2y_1).$$

Division can be accomplished either by converting numerator and denominator to the polar form and using the equations above, or by multiplying the numerator and denominator by the complex conjugate of the denominator. This is an exercise that is frequently required in circuit analysis:

$$\frac{z_1}{z_2} = \frac{x_1 + jy_1}{x_2 + jy_2} \cdot \frac{x_2 - jy_2}{x_2 - jy_2} = \frac{(x_1x_2 + y_1y_2) + j \cdot (x_2y_1 - x_1y_2)}{x_2^2 + y_2^2}$$

In this way we can separate the real and imaginary parts of the ratio, from which we can calculate the magnitude and phase, if necessary. Do not try to memorize such a formula! It is the simple technique of multiplying the numerator and denominator by the complex conjugate of the denominator that you should remember. Executing this technique always guarantees that the resulting denominator will be real, with the imaginary number  $j$  appearing only in the numerator.

## Working with Complex Impedance

Voltage and current are always real, observable quantities. In a linear A/C circuit with a sinusoidal stimulus, they will always have a form like  $V(t) = V_0 \cos(\omega t + \phi)$ . The algebraic complexities come in when we introduce capacitors and inductors, which produce  $\pm 90^\circ$  changes in phase. Adding sines and cosines with differing phases is algebraically painful, requiring expertise with trig identities. However, if the circuit is described by linear differential equations, then we can simplify life by adding an imaginary part to the voltage or current:

$$V(t) = V_0 \cos(\omega t + \phi) + j \cdot V_0 \sin(\omega t + \phi) = V_0 e^{j(\omega t + \phi)}$$

with the understanding that the observed voltage is just the real part of this expression. Now, when you do your circuit analysis you get to deal with the simple properties of the exponential function instead of nasty trig identities. When done, just take the real part of the final result, and that is your answer. As you will see, what this procedure will do for you is turn a set of linear differential equations into a set of linear algebraic equations.<sup>3</sup>

This works *only because the circuit is a linear circuit, described by linear differential equations*. Since linear equations do not involve any squares, square roots, and so forth of the voltage or current, or multiplication of one voltage or current by another, the real and imaginary parts don't get mixed up. Take a look at the equations in the previous section. The addition and subtraction equations do not mix up the real and imaginary parts, but the equations for multiplication and division do. Multiplying a complex number by a real constant also obviously does not mix up the real and imaginary parts. Essentially, a linear equation is one that will not mix up the real and imaginary parts of the voltages and currents. From a practical standpoint, a linear circuit is one that includes only passive components (resistors, capacitors, and inductors) plus voltage and/or current sources. No diodes, transistors, vacuum tubes, etc. are allowed.

It is perhaps worth mentioning here that the same formalism, with the same advantages of using complex numbers, works in mechanics when dealing with small, harmonic oscillations of mechanical systems.

The recipe for obtaining the steady-state<sup>4</sup> harmonic response of a linear circuit is straightforward. Write each non-static voltage or current source as a complex number:

$$V_0 e^{j\phi} \text{ or } I_0 e^{j\phi}$$

where the phase  $\phi$  can be taken to be zero if there is only one source. Otherwise the relative phases of the sources must be taken into account. Then treat each passive component as an impedance

$$\text{Resistor: } Z = R$$

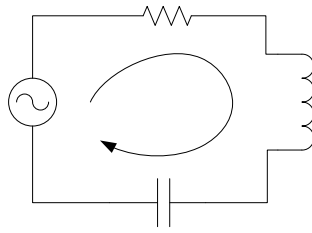
$$\text{Capacitor: } Z = \frac{1}{j\omega C}$$

$$\text{Inductor: } Z = j\omega L$$

---

<sup>3</sup> This procedure works for voltage and current sources that are sinusoidal (harmonic). However, a non-sinusoidal periodic source can be written as a Fourier series of sines and cosines. Each term in the series can be treated by the method described here. Since the circuit is linear, the response is just the linear superposition of the responses to the individual harmonic Fourier components.

<sup>4</sup> By steady-state, I mean turn all the switches on and then wait long enough for the transient behavior to dampen out and disappear. Usually the wait is very short, less than a blink of the eye.



**Figure 3. LRC series circuit.**

where in general the impedance relates the voltage *across* a component to the current passing *through* the component according to a generalization of Ohm's law:

$$V = IZ$$

Use Kirchhoff's laws to write a set of linear equations for the currents and voltage in the circuit, exactly as you would do for a circuit made up of batteries and resistors. The only difference is that some of the "resistances" are imaginary, so what you end up with is a set of complex linear equations. Solve the equations for the currents and voltages. This is tedious to do by hand, but keep in mind that a computer can solve an amazingly large set of complex linear equations in an instant, using standard "canned" programs. Many scientific calculators also have built-in functions for solving sets of linear complex equations. Finally, express the resulting voltages and/or currents in polar form, from which you can read off the amplitude and phase of each current or voltage.

As an example not included in Horowitz and Hill, let's analyze the standard series LRC circuit (Figure 3) which has a voltage oscillator in series with a resistor, capacitor, and inductor. The differential equation for this circuit follows from adding up the voltage changes around the loop:

$$V_0 e^{j\omega t} - IR - L \frac{dI}{dt} - \frac{Q}{C} = 0,$$

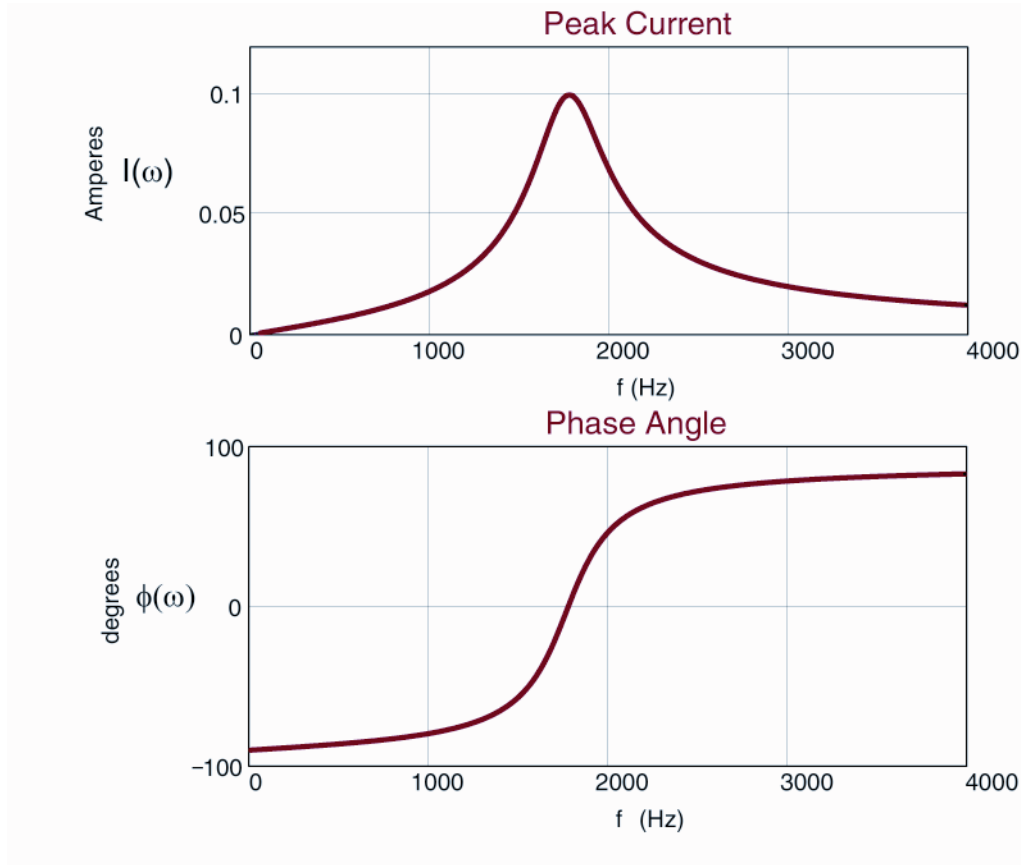
where  $V_0 e^{j\omega t}$  is the driving voltage, expressed as a complex quantity as suggested above, with an assumed phase  $\phi = 0$ . Using  $Q = \int Idt$ , we get an equation for the current:

$$L \frac{dI}{dt} + \frac{1}{C} \int Idt + RI = V_0 e^{j\omega t}.$$

This is readily solved by making the substitution  $I = I_0 e^{j(\omega t + \phi)}$ , which turns the differential equation into an algebraic equation:

$$\left( j\omega L + \frac{1}{j\omega C} + R \right) \cdot I_0 e^{j\phi} = V_0.$$

The quantity in parentheses is exactly the "impedance" that one would get by using the impedance rules listed above for resistors, capacitors, and inductors, plus the rule that impedances in series simply add up. So, from now on do not bother to write down the differential equation! Just assume the rules for complex impedance and immediately write down the algebraic equation.



**Figure 4. Resonance curves for an LRC series circuit, with  $R=10$  Ohms,  $C=2\mu\text{F}$ , and  $L=4\text{mH}$ .**

To analyze the series LRC circuit without writing any differential equation, we start with “Ohm’s Law” for a reactive circuit:

$$I = \frac{V_0}{Z} \text{ with } Z = R + \frac{1}{j\omega C} + j\omega L.$$

To do the division, I convert the impedance to polar form:

$$Z = R + j \cdot \left( \omega L - \frac{1}{\omega C} \right) = \sqrt{R^2 + \left( \omega L - \frac{1}{\omega C} \right)^2} \cdot e^{j\phi_z}$$

$$\text{with } \phi_z = \arctan\left(\frac{\omega L - \frac{1}{\omega C}}{R}\right) = \arctan\left(\frac{\omega^2 - \omega_0^2}{\gamma\omega}\right) \text{ and } \omega_0 \equiv \frac{1}{\sqrt{LC}} \text{ and } \gamma \equiv \frac{R}{L}.$$

So the current is given by

$$I = \frac{V_0}{\sqrt{R^2 + \left( \omega L - \frac{1}{\omega C} \right)^2}} \cdot e^{-j\phi_z} = \frac{V_0 \cdot \frac{\omega}{L}}{\sqrt{\gamma^2 \omega^2 + \left( \omega^2 - \omega_0^2 \right)^2}} \cdot e^{j\phi}$$

with  $\phi = -\arctan\left(\frac{\omega^2 - \omega_0^2}{\gamma\omega}\right)$  for the phase of the current.

This result exhibits a resonance, with  $\omega_0$ , the natural frequency of the circuit, being the frequency at which the impedance is minimum (and equal simply to  $R$ ) and the current is maximum, with a phase shift of zero relative to the voltage. Also,  $\gamma$  is a measure of the amount of damping in the circuit and, thus, the width of the resonance curve. This resonance behavior is illustrated in Figure 4.

## Analyzing a More Complex Linear Circuit

A more complicated looking example is shown in Figure 5, where the driving voltage is the real part of  $V(t) = 10e^{i\omega t}$  volts, with angular frequency  $\omega = 10^4$  radians/s. The impedance of the inductor is  $j\omega L = 4j$  ohms, and the impedance of the capacitor is  $1/j\omega C = -0.25j$  ohms. The objective is to find all the currents in the circuit and the equivalent impedance of the overall circuit, as seen by the voltage source. In this case there are 4 loops, so we will have 4 loop equations and 3 node equations. This goes beyond the complexity that you will see in homework or on any exam, but I throw it in as a random demonstration that the analysis is straightforward and can be formulated in a manner that makes a solution by computer fairly easy.

I prefer to work with the concept of “loop currents,” in order to avoid having to write down the node equations. To understand this concept, look at the circuit as redrawn in Figure 6. The four loops are evident, and each is associated with a loop current. The current through the capacitor is clearly  $i_4$ , the current through the voltage source is  $i_1$ , and the current through the 2-ohm resistor is  $i_3$ . However, each of the other 4 components has two currents flowing through it. For example, the current flowing upward through the inductor is  $i_3 - i_2$ , and the current flowing downward through the leftmost resistor is  $i_1 - i_2$ . Now, let’s apply Kirchhoff’s loop law to loop #1, starting at the lower left corner and proceeding upwards through the voltage source, in the direction of loop current  $i_1$ :

$$10 - (i_1 - i_2) \cdot 1 = 0$$

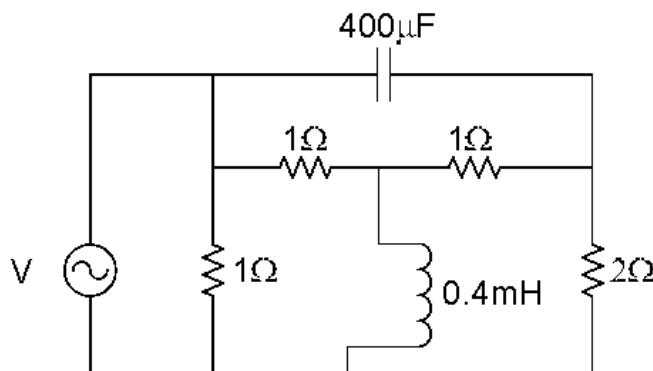


Figure 5. Example of a 4-loop linear circuit.

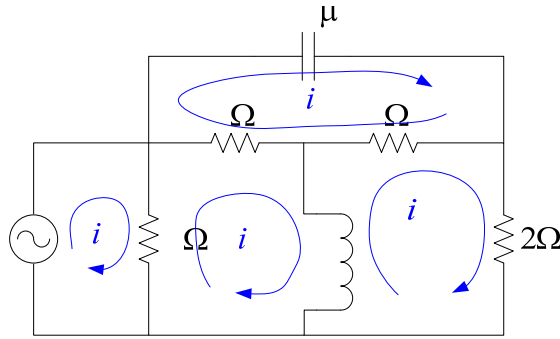


Figure 6. The circuit redrawn with loop currents.

Do the same for loop #2, starting in the lower left hand corner and proceeding upwards through the 1-ohm resistor, in the direction of the loop current  $i_2$  :

$$-(i_2 - i_1) \cdot 1 - (i_2 - i_4) \cdot 1 - (i_2 - i_3) \cdot 4j = 0$$

The other two equations, for loops 3 and 4 respectively, are

$$-(i_3 - i_2) \cdot 4j - (i_3 - i_4) \cdot 1 - i_3 \cdot 2 = 0$$

$$i_4 \cdot 0.25j - (i_4 - i_3) \cdot 1 - (i_4 - i_2) \cdot 1 = 0$$

Such equations are easiest to deal with if organized in matrix notation:

$$\begin{pmatrix} 1 & -1 & 0 & 0 \\ 1 & -2 - 4j & 4j & 1 \\ 0 & 4j & -3 - 4j & 1 \\ 0 & 1 & 1 & -2 + 0.25j \end{pmatrix} \times \begin{pmatrix} i_1 \\ i_2 \\ i_3 \\ i_4 \end{pmatrix} = \begin{pmatrix} 10 \\ 0 \\ 0 \\ 0 \end{pmatrix}$$

Solving these equations by hand would be tedious and annoying, but doing it by computer with a program like Mathcad, Mathematica, or Matlab couldn't be easier. For example, in Mathcad let's call the matrix  $Z$ , so the equation looks like

$$Z \cdot I = V$$

Fill the 16 complex values into the matrix  $Z$  and the 4 values into  $V$ , and then type

$$I = Z^{-1} \cdot V$$

and you're done!<sup>5</sup> The result is

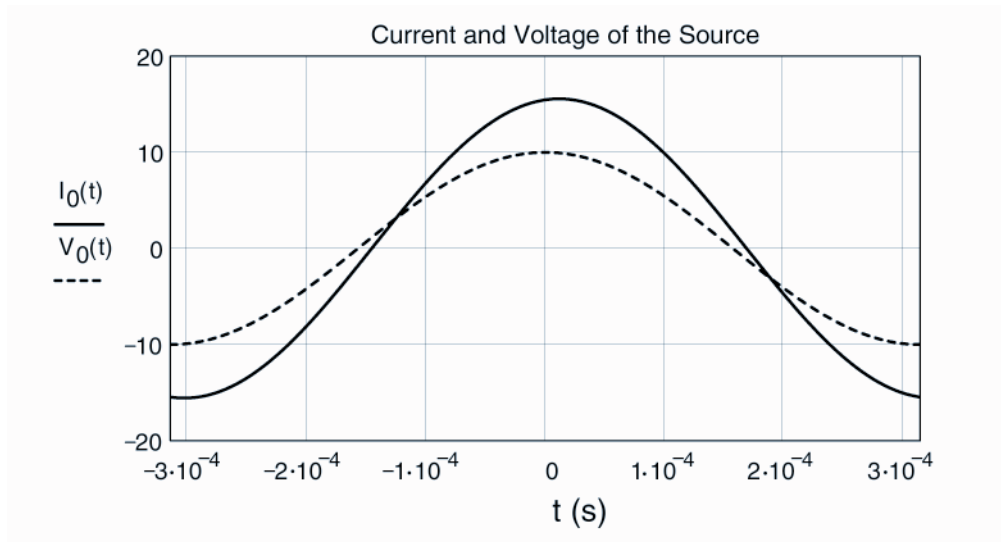
$$I = \begin{pmatrix} 15.457 - 1.787j \\ 5.457 - 1.787j \\ 4.990 + 0.652j \\ 5.213 + 0.084j \end{pmatrix}$$

Here is how to interpret the result. For example, the current  $i_1$  can be written in polar form as  $i_1 = 15.56e^{-j0.037\pi}$ , so the current as a function of time is

$$i_1(t) = 15.56 \cdot \cos(\omega t - 0.037\pi).$$

<sup>5</sup> This is not the most efficient way to solve 4 linear equations, but for this purpose, who cares? The computer will finish the calculation before you can say "go"!





**Figure 7. Plots of the voltage and current of the voltage supply as a function of time for a supply frequency of  $10^4$  radians/s. The current lags behind the voltage by several degrees.**

That is, the current passing through the source lags behind the voltage by  $0.037\pi$  radians, or about 6.7 degrees. Figure 7 shows how the current and voltage would look if displayed on an oscilloscope. The equivalent impedance of the circuit, as seen by the source, can be calculated from the ratio of the voltage and current of the source:

$$Z_{\text{eq}} = \frac{V}{i_1} = \frac{10}{15.56} \cdot e^{+j0.037\pi}.$$

Thus at this frequency, the circuit looks slightly inductive to the source.